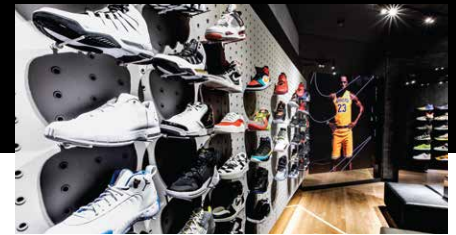




ATS PRO Project Highlight



LOS ANGELES, CA - Step into the Nike Store at the Beverly Center in Los Angeles, where our direct view LED wall brings the iconic No. 23 to life. As shoppers explore Nike's basketball collection, they are greeted by the powerful message: "It's only a crazy dream until you do it." This immersive visual experience not only enhances the retail environment but also embodies Nike's enduring impact and commitment to innovation. NIKE, Inc., which includes the Nike, Jordan, and Converse brands, is driven by a shared purpose to create a future of continual progress for athletes, sport, and our world. This installation exemplifies the transformative power of LED technology in retail, merging cutting-edge visuals with Nike's global footprint and culture of innovation.



Learn More

ats-pro.com

Contact Us

1-800-755-3235

Follow Us

[in linkedin.com/company/atsproled](https://www.linkedin.com/company/atsproled)
[@instagram.com/atsproled](https://www.instagram.com/atsproled)
[f facebook.com/atsproled](https://www.facebook.com/atsproled)
[@atsproled](https://twitter.com/atsproled)

