

SPROLINK®

CREATIVE VIDEO REVOLUTION



FM13PRO

ALL IN ONE FLIGHT CASE LIVE
STREAMING SWITCHER

www.sprolink.com

Overview

The FM13PRO is an brand new multifunctional broadcasting switcher with an integrated flight case design. It combines streaming, switching, PTZ camera control, audio mixing, transition effects, and in-house recording. It has a built-in hardware streaming engine and Wi-Fi module, allowing it to support various streaming softwares for wireless streaming, delivering high-quality professional multi-camera productions and enabling multi-platform live streaming.

Key Features

- All in One Flight Case Design
- Supports Type-C MV Output for Horizontal and Vertical Monitoring
- Built-in Wi-Fi Module for Wireless Streaming
- Supports 4 HDMI Inputs with Up to 4 Cameras
- Joystick PTZ Camera Control,
- Load PNG and JPG Images via USB Disk
- Supports USB Disk & HDD Recording
- Built-in Audio Mixer for Real Time Audio Mixing
- Equipped with Audio Input Interfaces for Real-Time Monitoring
- Built-in Web Server for Remote Control

Features



All in One Design

The FM13PRO features an integrated flight case design built-in a 13.5-inch magnetic monitoring display with a suitcase size. it's easy to carry to serve as a mobile workstation.



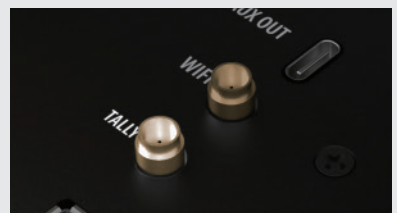
Supports Type-C MV Output

Equipped with a Type-C port, the FM13PRO supports MV output realizing horizontal and vertical screen monitoring.



Built-in Tally Wireless Transmission Module

The FM13PRO build in Tally system wireless transmission module, which can synchronize with Tally lights to enhance the live streaming experience.



Dual-Channel Streaming via Ethernet or Wi-Fi

The FM13PRO has a built-in hardware streaming engine that allows live streaming through Ethernet or Wi-Fi. Users are able to stream by inputting RTMP code via the built-in web server to realize smooth and high-quality stream in Tiktok & Facebook.



4 x Cameras Connection

With 4 HDMI inputs, the FM13PRO can connect different cameras and re-sync signals from different video formats, offering multiple viewing angles.



Joystick Control for PTZ Camera

Control up to 4 PTZ cameras through a router with the FM13PRO, allowing for seamless multi-camera switching simply and easily.



Support USB Image Load in JPG/PNG Format

It supports direct import of image files via USB disk, compatible with jpg and png formats.





Supports USB Drives and HDD Recording

The FM13PRO allows recording data to be directly stored on USB drives or HDD device, reducing post-production workload and facilitating long-term storage or recording.



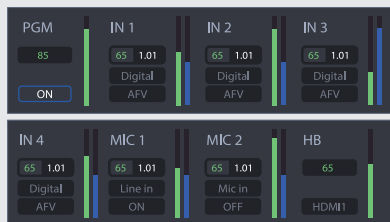
Various Customized Transition Effects

The FM13PRO offers a variety of transition effects, including multiple FADE, WIPE, DIP, and DVE transitions, and features duration buttons for setting video effects at 0.5 seconds, 1 second, and 1.5 seconds, ensuring smooth and seamless scene transitions.



Built-in Audio Mixer to Facilitate Real-Time Mixing of Audio Sources

It is built in professional audio mixer that supports both AFV and MIX audio modes, enabling mixing output of embedded HDMI audio and multi external audio.



Equipped with Audio Input for Real-time Monitoring

It is equipped with a headphone monitoring, enabling real-time monitoring of any input or output audio channel.



Virtual Image Chroma Key Algorithm

It is equipped with a powerful cinematic-level chroma key algorithm, which uses a color picker to sample the background color and automatically generate keying parameters, providing precise edge and spot control, making it a great tool for news broadcasts or live presentations!



APPLICATION

Outdoor Live Streaming

The FM13PRO is the ideal choice for outdoor live streaming. It supports multi-camera switching and deployment, capturing both full shots and close-up shots between the host and the products. Its all-in-one design is easy to carry, supports V-mount battery power, and it is the trouble shooter for outdoor power supply issues.



Conference Presentation

In business meetings, FM13PRO can achieve multi-camera switching. The PTZ camera angle can be controlled and preset by joystick. One camera can be set for close-up shots, another for wide-angle shots, and an additional computer can be used for PPT presentations. The PIP feature can also be used to enhance the visual experience of business presentations.



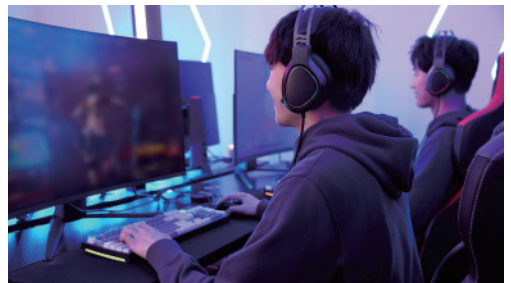
Various Events and Performances

It is portable and easy to carry allowing it to handle various events and performances. It has multiple built-in scene modes that can be easily recalled and saved. Additionally, you can copy the live production plans and recorded instructional videos to a USB drive or an external hard drive.



E-Sports Live Streaming

By connecting multiple gaming consoles and a camera for commentary, you can stream e-sports live on several platforms. You can also add commentary titles in FM13PRO, making the live stream more vivid and engaging!



SPECIFICATION

Interface	Input	HDMI 1.3 USB 2.0	4xHDMI-A 1xUSB TypeA	HDMI Input Interfaces Video Playback / File Loading UVC Input
	Output	HDMI1.3 USB 3.0 Type C	2xHDMI-A 1xUSB TypeA	PGM / PST UVC Output Port MV Output
	Audio	MIC IN LINE OUT PHONES	2x3.5mm Stereo Jack 1x3.5mm Stereo Jack 1x3.5mm Stereo Jack	Compatible with MIC/Line Input Mixed Audio Output Audio Monitoring
	Communication	LAN	1xRJ45	LAN Control PTZ Control
Input Resolution		HDMI	SMPTE VESA	720p@50/60 1080i@50 1080p@24/30/50/60 1024x768@60 1280x768@60 1280x800@60 1280x1024@60 1360x768@60 1366x768@60 1440x900@60 1600x1050@60 1680x1050@60 1920x1080@23.98/24/25/29.97 /30/50/59.94/60
Output Resolution	HDMI	SMPTE	720p@50/60 1080p@24/30/50/60	
	USB3.0	Video Streaming	720p@50/60 1080p@24/30/50/60	
Performance	Video Sampling	YUV 4:4:4		
	Latency	<3 Frames		
	Audio Latency	0-500ms (0-30/25 frame)		
Power	Input Voltage	12V/2A		
	Constant Power	20W		
Environment	Temperature	0°C~70°C		
	Humidity	10%~85%		
Weight	Net Weight	10kg		
	Gross Weight	11kg		
Dimension	Net Dimension	419mm x 346mm x 148mm		
	Gross Dimension	425mm x 355mm x 165mm		