



# F SERIES

LED THERE BE LIGHT

DESIGNED & ENGINEERED IN GERMANY  
**cameolight.com**



Cameo® is a registered brand of the Adam Hall Group.



**SOUND**  
TECHNOLOGY

**LIGHT**  
TECHNOLOGY

**STAGE**  
EQUIPMENT

**HARDWARE**  
FOR FLIGHTCASES

ADAM HALL GROUP BRANDS

**LDsystems** 

 **cameo**

**Gravity** 

 **Palmer**

**DEFENDER**

 **adam hall**



# F SERIES

BE LIGHT YEARS AHEAD

## Cameo® – For Lumen Beings

Touting its claim “for lumen beings”, the Cameo® brand expresses the fascination with lighting among light designers and light technicians, and their audiences.

Providing accurate, natural colour rendition, they are the perfect choice for theatrical lighting, photo studios and film sets: Cameo's F series luminaires. These Fresnel fixtures are available in Daylight, Tungsten and full colour RGBW versions. They are flicker free and virtually silent. F series luminaires feature high-performance lenses, continuously variable spot to flood adjustment and super smooth 16-bit dimming with 4 selectable curves and adjustable response. They come with an 8-way barn door and filter frame and are a superb energy-saving replacement for conventional Fresnels.



reddot winner 2020

# F4 D

## HIGH-PERFORMANCE FRESNEL SPOTLIGHT WITH DAYLIGHT LED

- ▶ LED Fresnel spotlight with daylight LED and 34,000 lm total light output
- ▶ Natural colour reproduction, CRI 96, TLCI > 94
- ▶ Continuous zoom for beam angles from 12° to 40°
- ▶ 16-bit technology for high-resolution dimming
- ▶ Four selectable dimmer curves with adjustable response
- ▶ Highly efficient heatpipe cooling with temperature-controlled fan
- ▶ RDM-capable, selectable pulse width modulation frequencies up to 25 kHz
- ▶ Flicker-free and silent operation, ideal for TV, film and theatre
- ▶ Quicklight function to save time when setting lights
- ▶ 8-way barndoor and colour filter frames included

Natural white daylight in precise reproduction quality: The CAMEO F4 D is a professional Fresnel spotlight with the latest LED technology. It's an outstanding replacement for conventional halogen Fresnel spotlights that also leads to significant energy savings. The 250 mm high-quality lens is flooded with a powerful luminous flux of 34,000 lm. The RDM-capable spotlight creates a soft-edged beam of light with a continuously adjustable beam angle of 12° to 40° (beam angle) or 24° to 47° (field angle). Its 520-watt daylight LED has a colour temperature of 5,600 K and a service life of 50,000 hours. Its extremely high colour rendering index of 96 reproduces pure and natural colours.

The F4 D has six DMX control modes, a fast strobe function and 16-bit dimmer curves with adjustable response. The unique quicklight function makes setting up the spotlight much easier. Simply remove the DMX signal for a moment, increase the lighting brightness via the push encoder and adjust the spotlight.



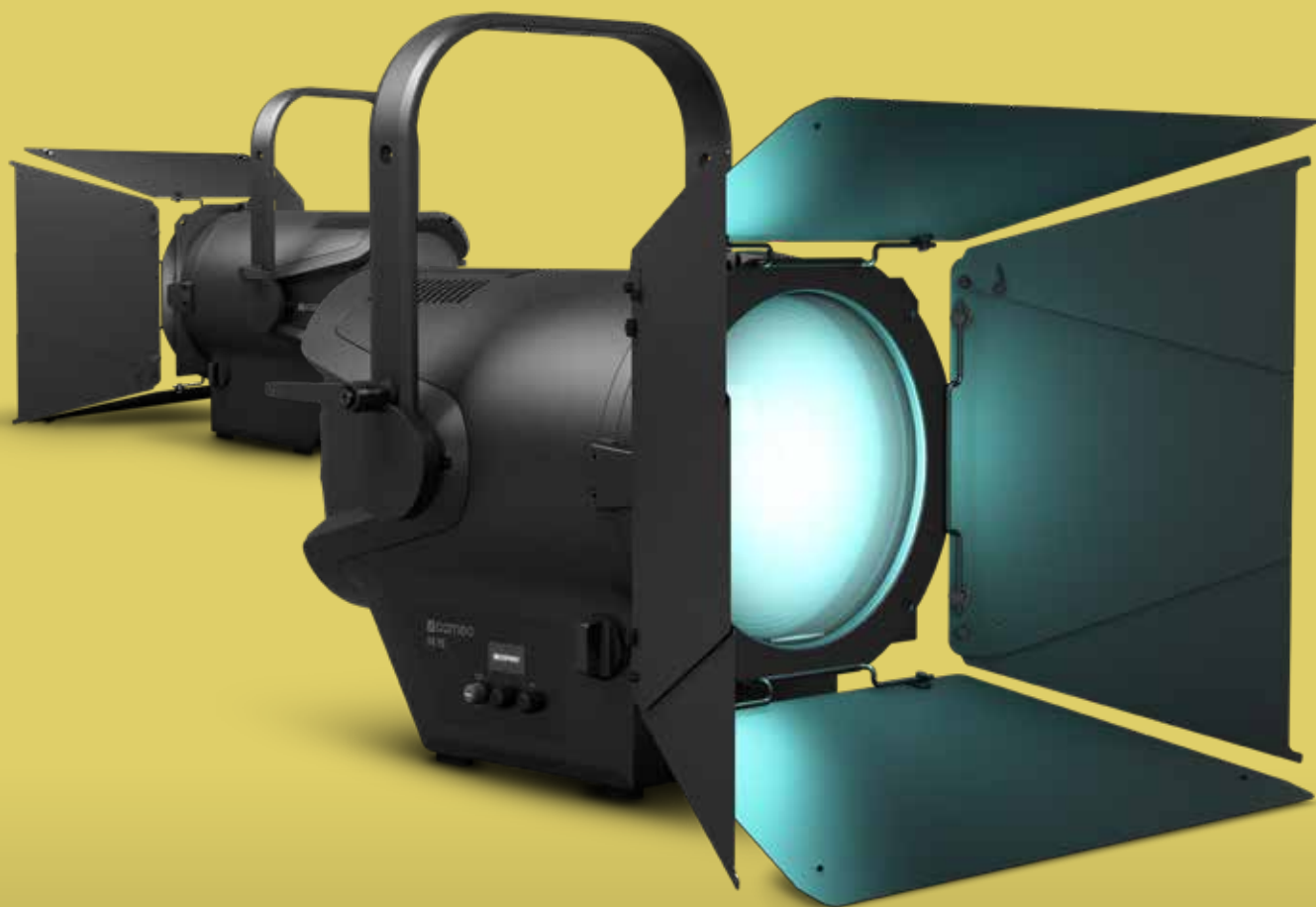
FOR MORE INFORMATION AND ACCESSORIES  
PLEASE SCAN THE QR-CODES

### PRODUCT



### ACCESSORIES





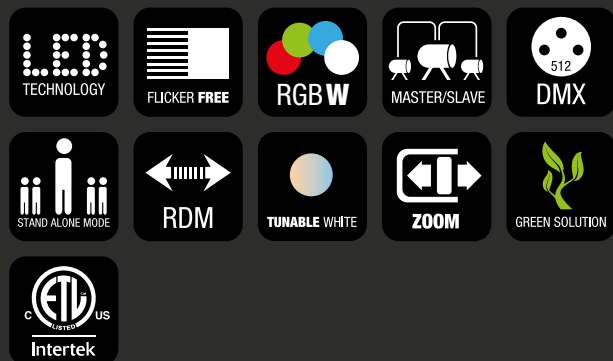
reddot winner 2020

# F4 FC

## HIGH-PERFORMANCE FRESNEL SPOTLIGHT WITH RGBW LED

- ▶ Full-colour LED Fresnel spotlight with 11,000 lm luminous flux
- ▶ Seamless colour temperature adjustment from 1,600 to 6,500 K, CRI >90
- ▶ Continuous zoom for beam angles from 12° to 40°
- ▶ 16-bit technology for high-resolution dimming
- ▶ Highly efficient heat pipe cooling with temperature-controlled fan
- ▶ RDM-capable with silent mode for studio use
- ▶ Four selectable dimmer curves with adjustable response
- ▶ Flicker-free and silent operation, ideal for TV, film and theatre
- ▶ Quicklight function to save time when setting lights
- ▶ 8-way barndoor and colour filter frames included

A complete palette of dynamic colours and countless shades of white at maximum reproduction quality: The Cameo F4 FC is your perfect Fresnel spotlight for professional applications in front of the camera and in theatres. Its white tones can be precision-adjusted in CCT mode from 1,600 K to 6,500 K at a constant CRI of over 90, and perfectly adjusted to skin tones, camera sensors and ambient light via additional green-magenta correction. Using only three control circuits, colour-blending in HSI mode facilitates rapid adjustment of colour, intensity and saturation at the light desk. Using additional colour filters is a thing of the past. The high-quality 250 mm lens creates a soft-edged beam of light that can be manually and gradually adjusted to all intermediate positions from spot to flood in the 12° to 40° beam angle. At the same time, the integrated condenser lens provides evenly blended colours and shadow-free colour light dispersion, even when using the barndoor.



FOR MORE INFORMATION AND ACCESSORIES  
PLEASE SCAN THE QR-CODES

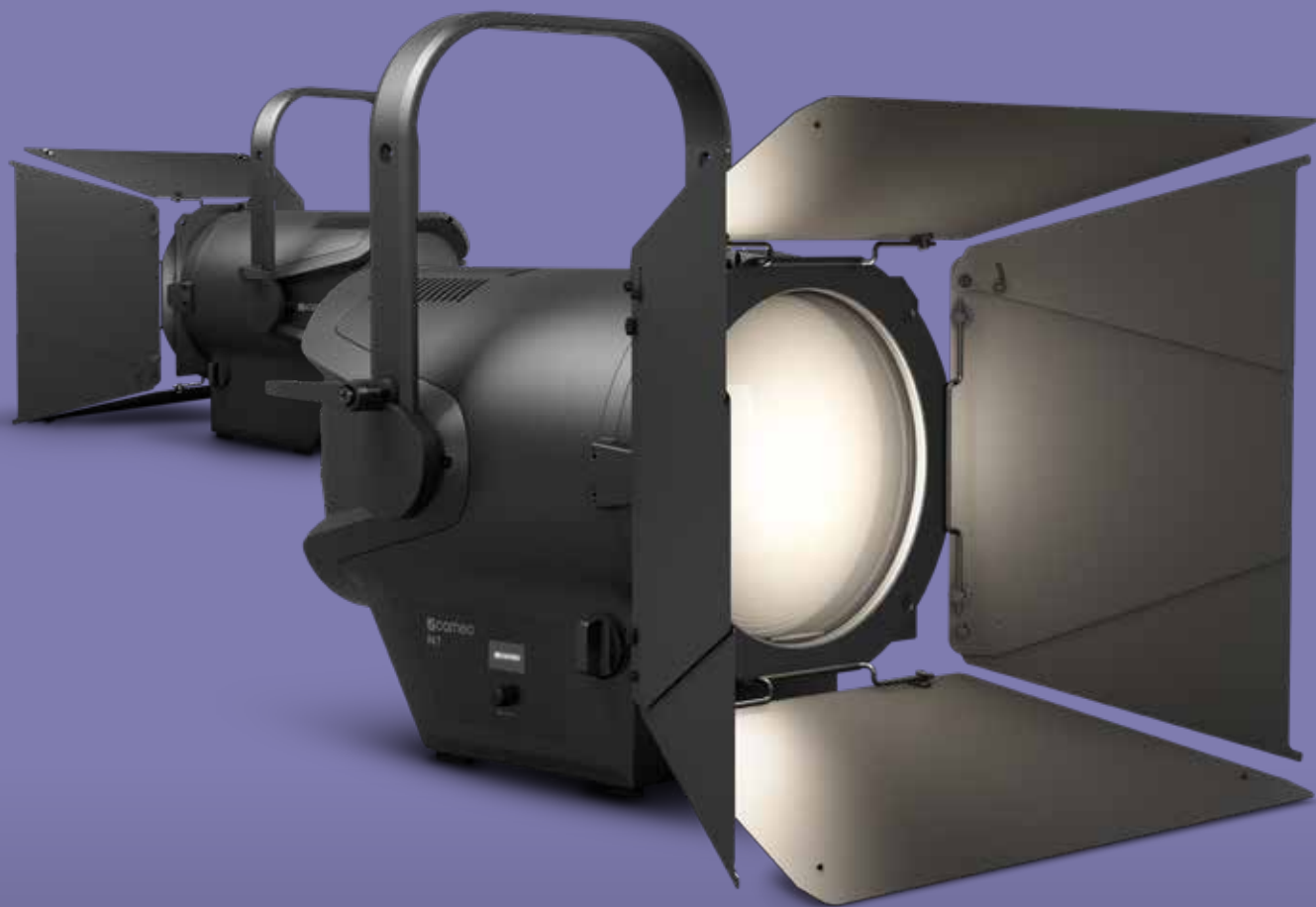
PRODUCT



ACCESSORIES







reddot winner 2020



# F4 T

## HIGH-PERFORMANCE FRESNEL SPOTLIGHT WITH TUNGSTEN LED

- ▶ Tungsten LED Fresnel spotlight with 29,500 lm total power output, replaces conventional 2 kW halogen Fresnel
- ▶ Lifelike colour reproduction, CRI rating of 96, TLCI of 96
- ▶ Continuous zoom for beam angles from 12° to 40°
- ▶ Four selectable 16-bit dimmer curves with adjustable response
- ▶ Highly efficient cooling thanks to a heatpipe and temperature-controlled fan
- ▶ Control via DMX or RDM, silent mode for studio use
- ▶ Selectable pulse width modulation frequencies up to 25 kHz
- ▶ Flicker-free and noiseless operation, ideal for TV, film, photography studios and theatre
- ▶ Quicklight function to save time when setting lights
- ▶ 8-way barndoor and colour filter frames included

Warm-white light is essential for creating atmospheric stage experiences: The Cameo F4 T is a professional Fresnel spotlight with a high-quality 250 mm lens and high luminous flux of 29,500 lm. The RDM-capable spotlight creates a soft-edged beam of light with a continuously adjustable beam angle of 12° to 40° and is a perfect, energy-saving replacement for traditional 2-kW Fresnel models. Its 520-watt warm-white LED has a colour temperature of 3,200 K and a service life of 50,000 hours. Its extremely high colour rendering index of 96 reproduces pure and natural colours.

The F4 T has 6 DMX control modes, a fast strobe function and 4 16-bit dimmer curves with adjustable response. The unique quicklight function makes setting up the spotlight much easier. Simply remove the DMX signal for a moment, increase the lighting brightness via the push encoder and adjust the spotlight. Six selectable pulse width modulation frequencies up to 25 kHz ensure flicker-free operation.



FOR MORE INFORMATION AND ACCESSORIES  
PLEASE SCAN THE QR-CODES

### PRODUCT



### ACCESSORIES





# F4 D PO IP

## POLE-OPERATED OUTDOOR FRESNEL SPOTLIGHT WITH TUNGSTEN LED

- ▶ Fresnel spotlight with daylight LED, 5,600 K
- ▶ 30,000 lm luminous flux replaces conventional 2kW halogen Fresnel spotlights
- ▶ IP65-certified for permanent outdoor use
- ▶ Pole-operated for efficient use in different environments (TV studios, etc.)
- ▶ Natural colour reproduction (CRI: 94, TLCI: 96)
- ▶ Continuous zoom range from 14° to 43°
- ▶ Flicker-free camera images thanks to selectable pulse width modulation frequencies up to 25 kHz
- ▶ Selectable 16-bit dimmer curves for smooth dimming
- ▶ 8-way barn door and colour filter frame included
- ▶ Highly efficient cooling system and silent mode for noise-free operation

It can be challenging with ever-changing weather conditions to do concerts or film & TV productions outdoors. In order to still rely on the natural daylight of a zoomable Fresnel spotlight here, there's the dust- and splash water-protected, IP65-certified F4 D PO IP spotlight by Cameo. It is pole-operated making it easy to adjust from the ground.

The F4 D PO IP from the Cameo F Series is a natural light specialist with a CRI value of 95 and a TLCI of 94. The precise 250 mm Fresnel glass lens with a continuous zoom lets you keep control over the 30,000 lm white light, whether you use it to shine the spotlight right down on performers, speakers or objects or apply it as area lighting for entire scenes and surfaces.

The F4 D PO IP is a low-maintenance, pole-operated LED daylight spotlight with clear daylight reproduction, which remains fully usable even outdoors, thanks to IP65 - a real work relief for fast and natural illumination.



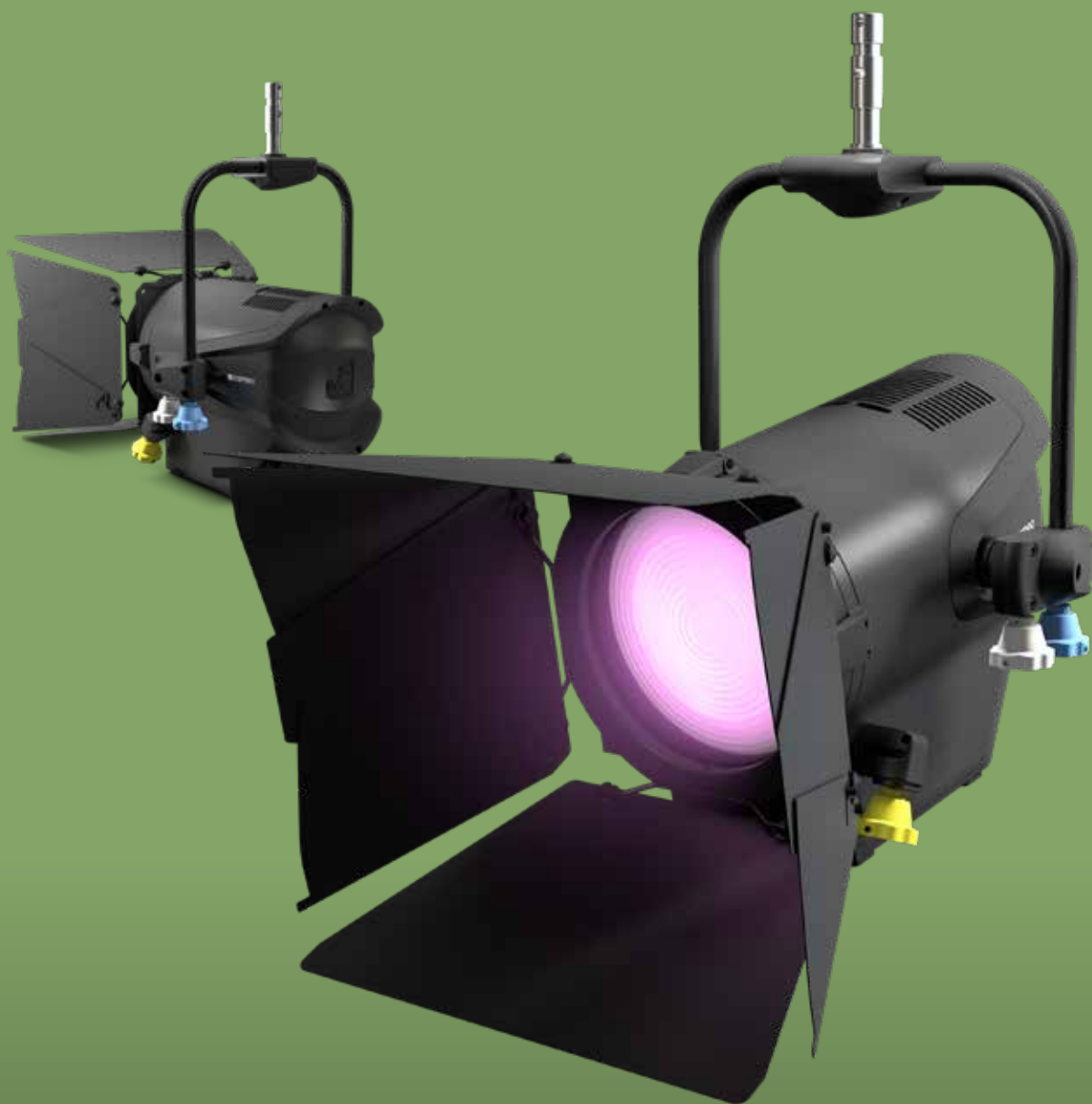
FOR MORE INFORMATION AND ACCESSORIES  
PLEASE SCAN THE QR-CODES

### PRODUCT



### ACCESSORIES





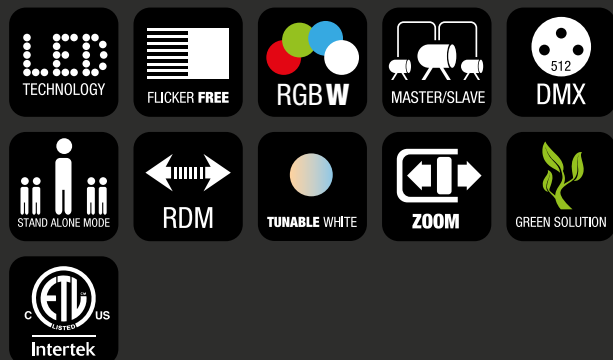
# F4 FC PO IP

## POLE-OPERATED OUTDOOR FRESNEL SPOTLIGHT WITH RGBW LED - IP65

- ▶ Fresnel spotlight with full colour LED (luminous flux of 10,000 lm)
- ▶ Infinitely variable colour temperature adjustment (1,600-6,500 K)
- ▶ IP65-certified for permanent outdoor use
- ▶ Pole-operated for efficient use in different environments (TV studios, etc.)
- ▶ Natural colour reproduction (CRI > 90)
- ▶ Continuous zoom range from 14° to 52°
- ▶ Flicker-free camera images thanks to selectable pulse width modulation frequencies up to 25 kHz
- ▶ Selectable 16-bit dimmer curves for smooth dimming
- ▶ 8-way barn door and colour filter frame included
- ▶ Highly efficient cooling system and silent mode for noise-free operation

It can be challenging with ever-changing weather conditions to do concerts or film & TV productions outdoors. That's why the dust-proof and water-resistant, IP65-certified Cameo F4 FC PO IP spotlight was developed so you can still achieve the full colour spectrum of a zoomable Fresnel full-colour spotlight. It is pole-operated making it easy to adjust from the ground.

It's white tones can be accurately set in CCT mode from 1,600 K to 6,500 K with a constant CRI above 95. The precise 250 mm Fresnel glass lens with a continuous zoom lets you keep control over the 10,000 lm light in every nuance and colour temperature, whether you use it to shine the spotlight right down on performers or objects or apply it as area lighting for entire scenes and surfaces.



FOR MORE INFORMATION AND ACCESSORIES  
PLEASE SCAN THE QR-CODES

PRODUCT



ACCESSORIES





# F4 T PO IP

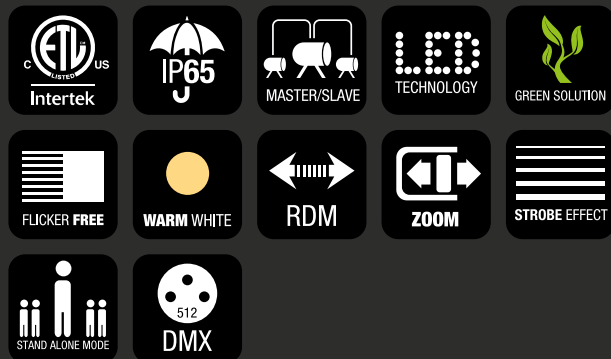
## POLE-OPERATED OUTDOOR FRESNEL SPOTLIGHT WITH TUNGSTEN LED

- ▶ Fresnel spotlight with tungsten LED, 3,200 K
- ▶ 24,000 lm luminous flux replaces conventional 2 kW halogen Fresnel spotlights
- ▶ IP65-certified for permanent outdoor use
- ▶ Pole-operated for efficient use in different environments (TV studios, etc.)
- ▶ Natural color reproduction (CRI: 95, TLCI: 96)
- ▶ Continuous zoom range from 14° to 43°
- ▶ Flicker-free camera images thanks to selectable pulse width modulation frequencies up to 25 kHz
- ▶ Selectable 16-bit dimmer curves for smooth dimming
- ▶ 8-way barn door and color filter frame included
- ▶ Highly efficient cooling system and silent mode for noise-free operation

It can be challenging with ever-changing weather conditions to do concerts or film & TV productions outdoors. In order to still rely on the warm light of a zoomable Fresnel spotlight here, there's the dust- and splash water-protected, IP65-certified F4 T PO IP spotlight by Cameo. It is pole-operated making it easy to adjust from the ground.

The F4 T PO IP from the Cameo F Series is a natural light specialist with a CRI value of 95 and a TLCI of 96. The precise 250 mm Fresnel glass lens with a continuous zoom lets you keep control over the 26,000 lm warm white light, whether you use it to shine the spotlight right down on performers, speakers or objects or apply it as area lighting for entire scenes and surfaces.

A low-maintenance, pole-operated LED tungsten spotlight with warm light reproduction, which remains fully usable even outdoors, thanks to IP65 - a real work relief for fast and natural illumination.



FOR MORE INFORMATION AND ACCESSORIES  
PLEASE SCAN THE QR-CODES

PRODUCT



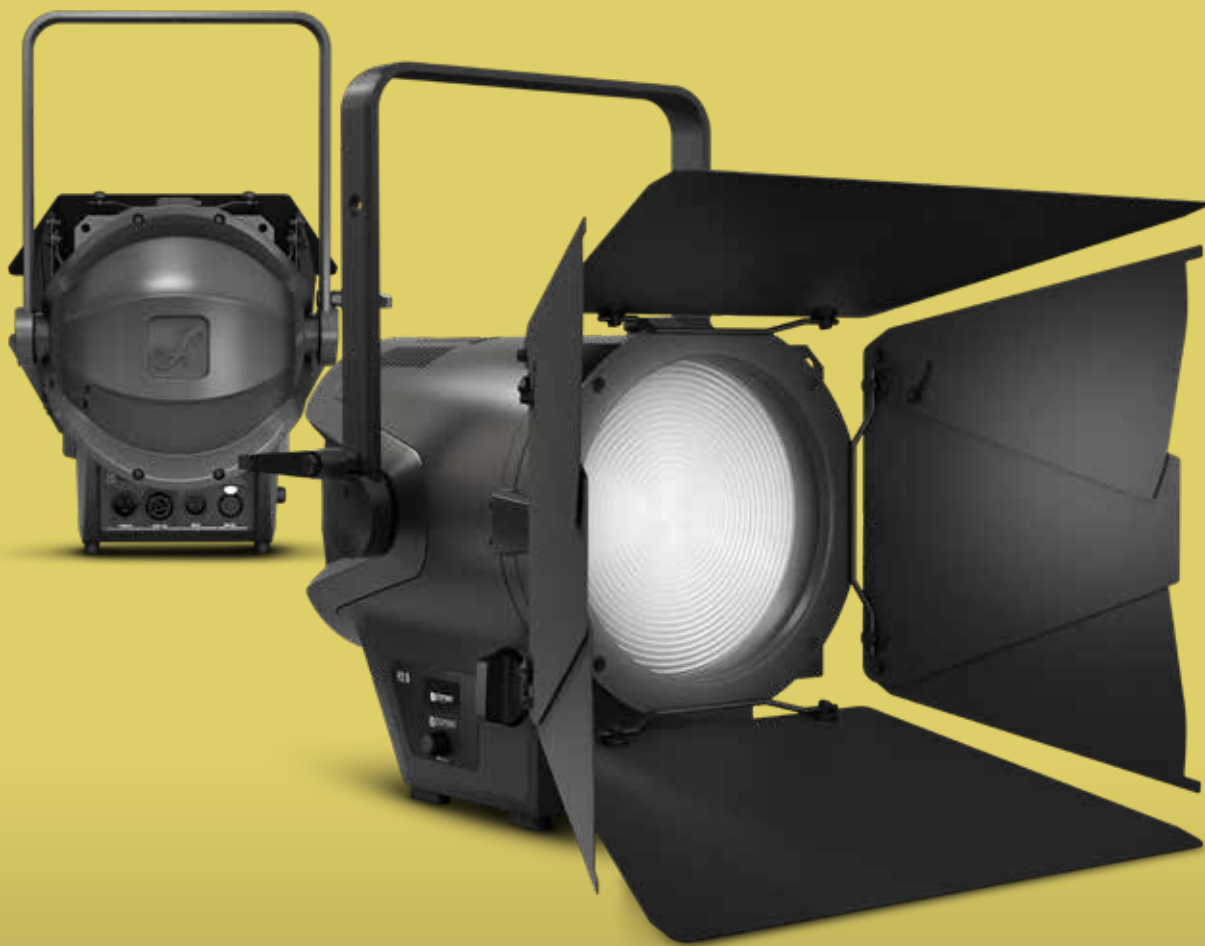
ACCESSORIES







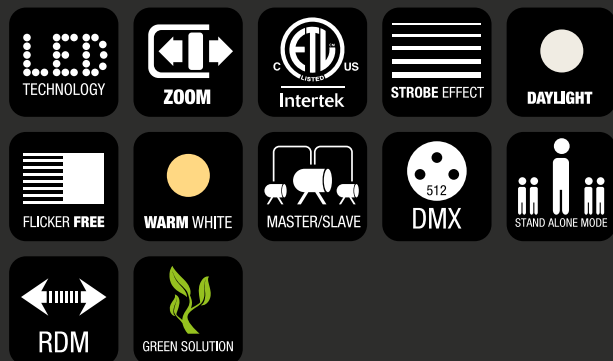




# F2 D

## HIGH-PERFORMANCE FRESNEL WITH DAYLIGHT LED

- ▶ Daylight LED Fresnel with 5,400 K colour temperature and 15,000 lm output
- ▶ Perfect replacement for conventional 1 kW Fresnels
- ▶ Faithful colour reproduction, CRI rating of 96, TLCI of 97
- ▶ Continuously variable zoom for 15° to 40° beam spread
- ▶ 16-bit dimming with 4 selectable curves and adjustable response
- ▶ Super efficient heat pipe cooling and temperature controlled fan for optimum operation
- ▶ RDM enabled
- ▶ Selectable PWM frequencies up to 25 kHz
- ▶ Flicker-free and silent operation, ideal for TV, film and theatre applications
- ▶ Includes 8-way barn door and gel frame



The Cameo F2 D is a professional Fresnel light with high-quality 200 mm lens and huge 15,000 lm output delivering a soft-edged beam with continuously variable 15° to 40° spread. A perfect and energy saving replacement for conventional 1 kW Fresnels, the RDM-enabled spot light is powered by a single 240 watt daylight LED with 50,000 h life expectancy. It has a colour temperature of 5,400 K and super high CRI of 96 showing colours faithfully and realistically.

The F2 D provides 6 modes of DMX control, a high-speed strobe function and smooth 16-bit dimming with a choice of 4 curves and adjustable response. It offers a selection of 6 PWM frequencies up to 25 kHz for flicker-free performance, and the super efficient heat pipe cooling and temperature controlled fan ensure optimum operation. The Fresnel's rugged die-cast aluminium housing features a rotary encoder and OLED display for easy configuration plus 5-pin DMX and Power Twist inputs and outputs for convenient daisy-chaining. The fixture comes with an 8-way barn door, gel frame and power cord.

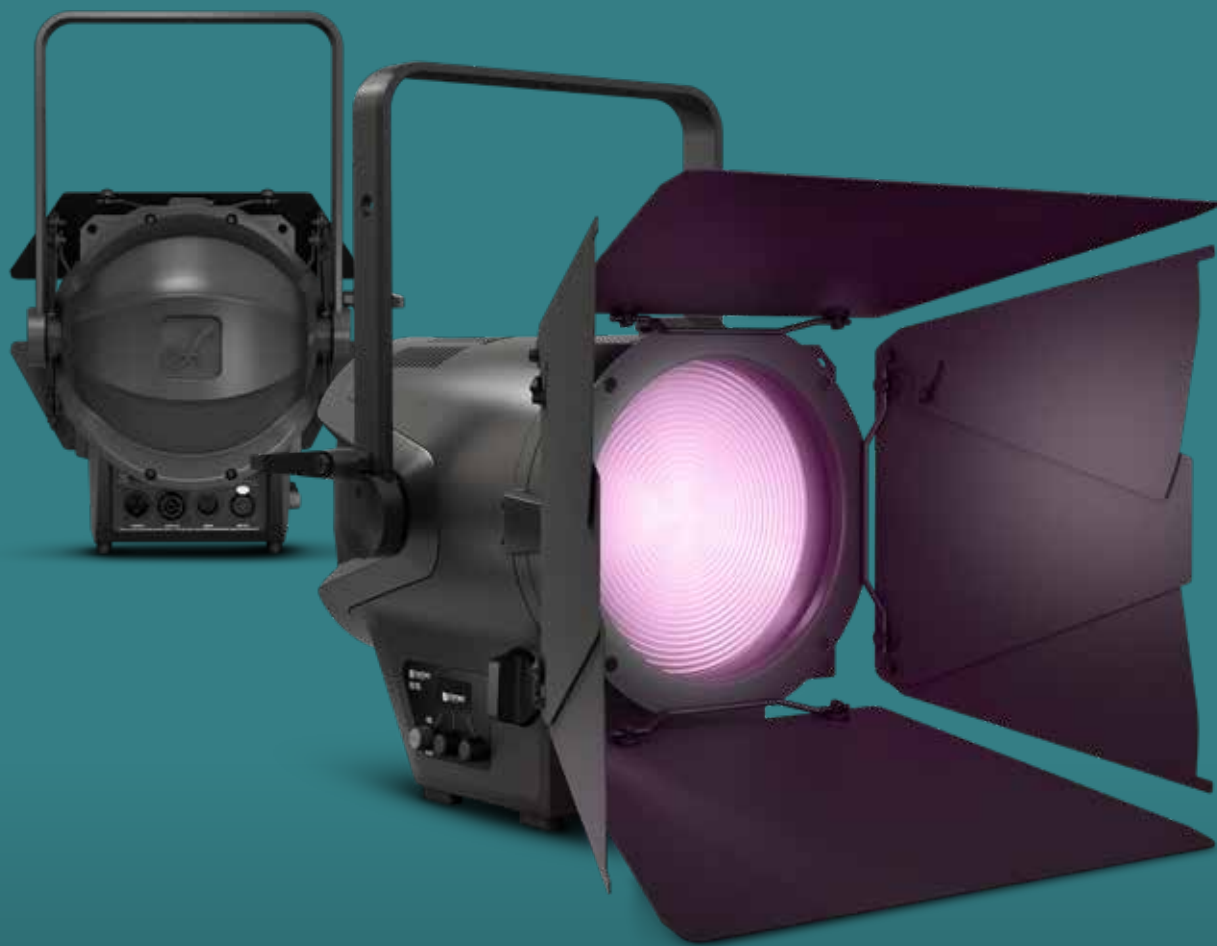
FOR MORE INFORMATION AND ACCESSORIES  
PLEASE SCAN THE QR-CODES

### PRODUCT



### ACCESSORIES



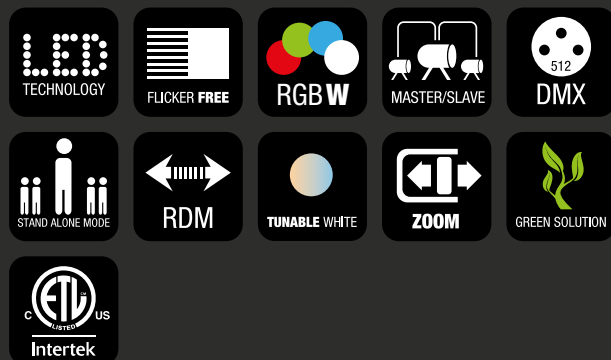


# F2 FC

## HIGH-PERFORMANCE FRESNELL WITH RGBW LED

- ▶ Full colour Fresnel with special RGBW LED and a CRI of over 90
- ▶ Seamless colour temperature adjustment from 1,600 K to 6,500 K
- ▶ Adjustable green-magenta correction
- ▶ Brilliant colours and precise white tone adjustment
- ▶ Continuous zoom for beam angles from 18° to 55°
- ▶ Four selectable 16-bit dimmer curves with adjustable response
- ▶ Highly efficient cooling thanks to a heatpipe and temperature-controlled fan
- ▶ Control via DMX and RDM
- ▶ Selectable pulse width modulation frequencies up to 25 kHz
- ▶ Flicker-free and noiseless operation, ideal for TV, film, photography studios and theatre
- ▶ Includes 8-way barndoor and gel filter frames

A complete palette of dynamic colours, and countless shades of white at maximum reproduction quality – the Cameo F2 FC is your perfect Fresnel spotlight for professional application in front of the camera and in theatres. Its white tones can be precision-adjusted in CCT mode from 1,600 K to 6,500 K at a constant CRI of over 90, and perfectly adjusted to skin tones, camera sensors and ambient light via additional green-magenta correction. RGBW colour-blending in HSI mode facilitates rapid adjustment of colour, intensity and saturation at the light desk using only three control circuits. Using additional colour filters is in the past. The high-quality 200 mm lens creates a soft-edged beam of light, which can be manually and gradually adjusted in the 18° to 55° beam angle from spot to flood and all intermediate positions. At the same time, the integrated condenser lens provides evenly blended colours and colour shadow-free light dispersion, even when using the barndoor.



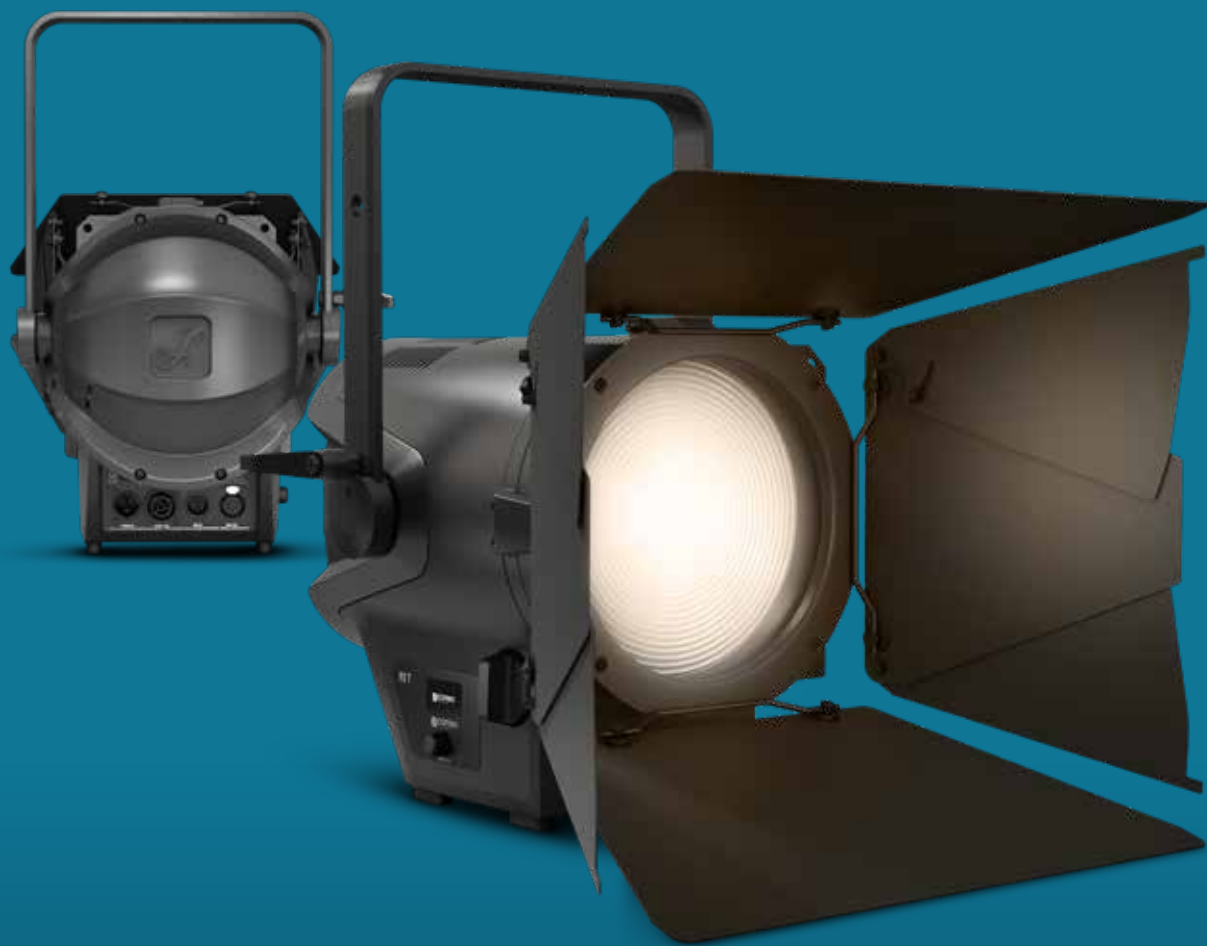
FOR MORE INFORMATION AND ACCESSORIES  
PLEASE SCAN THE QR-CODES

### PRODUCT



### ACCESSORIES







# F2 T

## HIGH-PERFORMANCE FRESNEL WITH TUNGSTEN LED

- ▶ Tungsten LED Fresnel with 3,200 K colour temperature and 12,500 lm output
- ▶ Perfect replacement for conventional 1 kW Fresnels
- ▶ Faithful colour reproduction, CRI rating of 96, TLCI of 97
- ▶ Continuously variable zoom for 15° to 40° beam spread
- ▶ 16-bit dimming with 4 selectable curves and adjustable response
- ▶ Super efficient heat pipe cooling and temperature controlled fan for optimum operation
- ▶ RDM enabled
- ▶ Selectable PWM frequencies up to 25 kHz
- ▶ Flicker-free and silent operation, ideal for TV, film and theatre applications
- ▶ Includes 8-way barn door and gel frame

The Cameo F2 T is a professional Fresnel light with high-quality 200 mm lens and huge 12,500 lm output delivering a soft-edged beam with continuously variable 15° to 40° spread. A perfect and energy saving replacement for conventional 1 kW Fresnels, the RDM-enabled spot light is powered by a single 240 watt warm white LED with 50,000 h life expectancy. It has a colour temperature of 3,200 K and super high CRI of 97 showing colours faithfully and realistically.

The F2 T provides 6 modes of DMX control, a high-speed strobe function and smooth 16-bit dimming with a choice of 4 curves and adjustable response. It offers a selection of 6 PWM frequencies up to 25 kHz for flicker-free performance, and the super efficient heat pipe cooling and temperature controlled fan ensure optimum operation. The Fresnel's rugged die-cast aluminium housing features a rotary encoder and OLED display for easy configuration plus 5-pin DMX and Power Twist inputs and outputs for convenient daisy-chaining. The fixture comes with an 8-way barn door, gel frame and power cord.



FOR MORE INFORMATION AND ACCESSORIES  
PLEASE SCAN THE QR-CODES

### PRODUCT



### ACCESSORIES





# F2 D P0

## POLE-OPERATED FRESNEL SPOTLIGHT WITH TUNGSTEN LED

- ▶ Tungsten LED Fresnel with 3,200 K colour temperature and 12,500 lm output
- ▶ Easy control from the base by using a bar for pan, tilt and zoom
- ▶ Perfect replacement for conventional 1 kW Fresnels
- ▶ Faithful colour reproduction, CRI rating of 96, TLCI of 97
- ▶ Continuously variable zoom for 15° to 40° beam spread
- ▶ 16-bit dimming with 4 selectable curves and adjustable response
- ▶ Super efficient heat pipe cooling and temperature controlled fan for optimum operation
- ▶ RDM enabled
- ▶ Selectable PWM frequencies up to 25 kHz
- ▶ Flicker-free and silent operation, ideal for TV, film and theatre applications
- ▶ Includes 8-way barn door and gel frame

### Energy saving par excellence - Cameo F2 T P0 now even simpler to operate

Looking for a professional Fresnel spotlight with a high-quality 200 mm lens and a high luminous flux of 12,500 lm? The Cameo F2 T P0 is your perfect choice. Now also with pole operation: The Cameo F2 T P0 is perfect for anyone who prefers precise manual adjustment from the ground and is unable or unwilling to use a ladder. The RDM-enabled spotlight creates a soft edged beam of light with a continuously adjustable beam angle of 15° to 40°. It's the perfect, energy-saving replacement for traditional 1-kW Fresnel models. Its 240-watt warm white LED has a colour temperature of 3,200 K and a service life of 50,000 hours. Its extremely high colour rendering index of 97 reproduces pure and natural colours.

The F2 T P0 has 6 DMX control modes, a fast strobe function and four 16-bit dimmer curves with adjustable response.



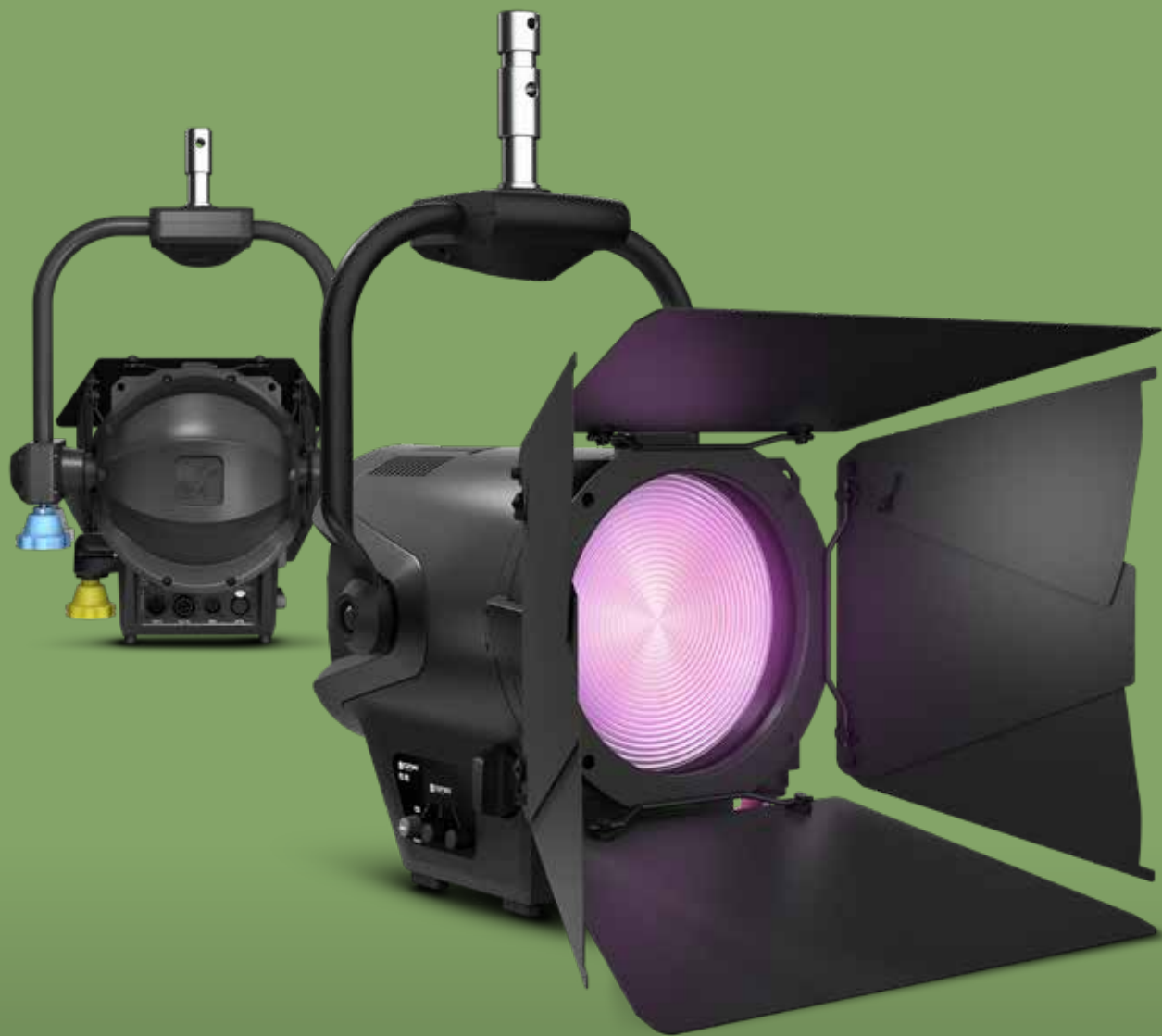
FOR MORE INFORMATION AND ACCESSORIES  
PLEASE SCAN THE QR-CODES

### PRODUCT



### ACCESSORIES

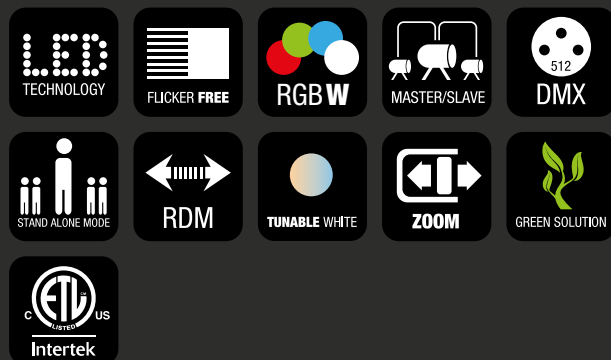




# F2 FC P0

## POLE-OPERATED FRESNEL SPOTLIGHT WITH RGBW LED

- ▶ Full Colour Fresnel with special RGBW LED and CRI > 90 constantly
- ▶ Easy to operate from the floor with a pole for pan, tilt and zoom
- ▶ Seamless colour temperature adjustment from 1,600 K to 6,500 K
- ▶ Adjustable green-magenta correction
- ▶ Continuous zoom for beam angles from 18° to 55°
- ▶ Four selectable 16-bit dimmer curves with adjustable response
- ▶ Highly efficient cooling thanks to a heatpipe and temperature-controlled fan
- ▶ Control via DMX and RDM
- ▶ Flicker-free and noiseless operation, ideal for TV, film, photography studios and theatre
- ▶ Includes 8-way barn door and gel filter frames



### Leaves nothing to be desired in terms of colour preferences and white shades - the Cameo F2 FC P0

A complete palette of dynamic colours and countless shades of white at maximum reproduction quality - the Cameo F2 FC P0 is your perfect Fresnel spotlight for professional application in front of the camera and in theatres. Its pole operability now also makes the Cameo F2 FC P0 a great choice for anyone who prefers precise manual adjustment from the ground and is unable or unwilling to use a ladder. Its white tones can be precision-adjusted in CCT mode from 1,600 K to 6,500 K at a constant CRI of over 90, and perfectly adjusted to skin tones, camera sensors and ambient light via additional green-magenta correction. RGBW colour-blending in HSI mode facilitates rapid adjustment of colour, intensity and saturation at the light desk using only three control circuits. Using additional colour filters is a thing of the past. The high-quality 200 mm lens creates a soft-edged beam of light that can be manually and gradually adjusted to all intermediate positions from spot to flood in the 18° to 55° beam angle.

FOR MORE INFORMATION AND ACCESSORIES  
PLEASE SCAN THE QR-CODES

#### PRODUCT



#### ACCESSORIES

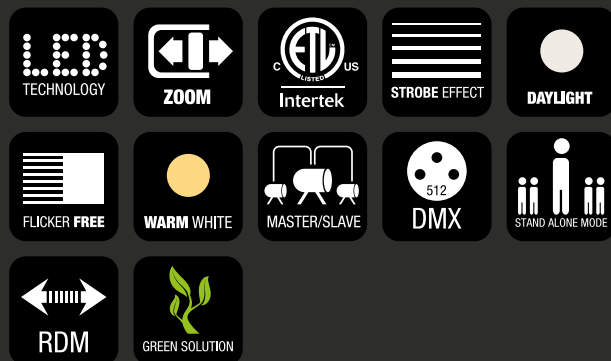




# F2 T P0

## POLE-OPERATED FRESNEL SPOTLIGHT WITH TUNGSTEN LED

- ▶ Tungsten LED Fresnel with 3,200 K colour temperature and 12,500 lm output
- ▶ Easy control from the base by using a bar for pan, tilt and zoom
- ▶ Perfect replacement for conventional 1 kW Fresnels
- ▶ Faithful colour reproduction, CRI rating of 96, TLCI of 97
- ▶ Continuously variable zoom for 15° to 40° beam spread
- ▶ 16-bit dimming with 4 selectable curves and adjustable response
- ▶ Super efficient heat pipe cooling and temperature controlled fan for optimum operation
- ▶ RDM enabled
- ▶ Selectable PWM frequencies up to 25 kHz
- ▶ Flicker-free and silent operation, ideal for TV, film and theatre applications
- ▶ Includes 8-way barn door and gel frame



### Energy saving par excellence - Cameo F2 T P0 now even simpler to operate

Looking for a professional Fresnel spotlight with a high-quality 200 mm lens and a high luminous flux of 12,500 lm? The Cameo F2 T P0 is your perfect choice. Now also with pole operation: The Cameo F2 T P0 is perfect for anyone who prefers precise manual adjustment from the ground and is unable or unwilling to use a ladder. The RDM-enabled spotlight creates a soft edged beam of light with a continuously adjustable beam angle of 15° to 40°. It's the perfect, energy-saving replacement for traditional 1-kW Fresnel models. Its 240-watt warm white LED has a colour temperature of 3,200 K and a service life of 50,000 hours. Its extremely high colour rendering index of 97 reproduces pure and natural colours.

The F2 T P0 has 6 DMX control modes, a fast strobe function and four 16-bit dimmer curves with adjustable response. Six selectable pulse width modulation frequencies up to 25 kHz ensure flicker-free operation.

FOR MORE INFORMATION AND ACCESSORIES  
PLEASE SCAN THE QR-CODES

#### PRODUCT



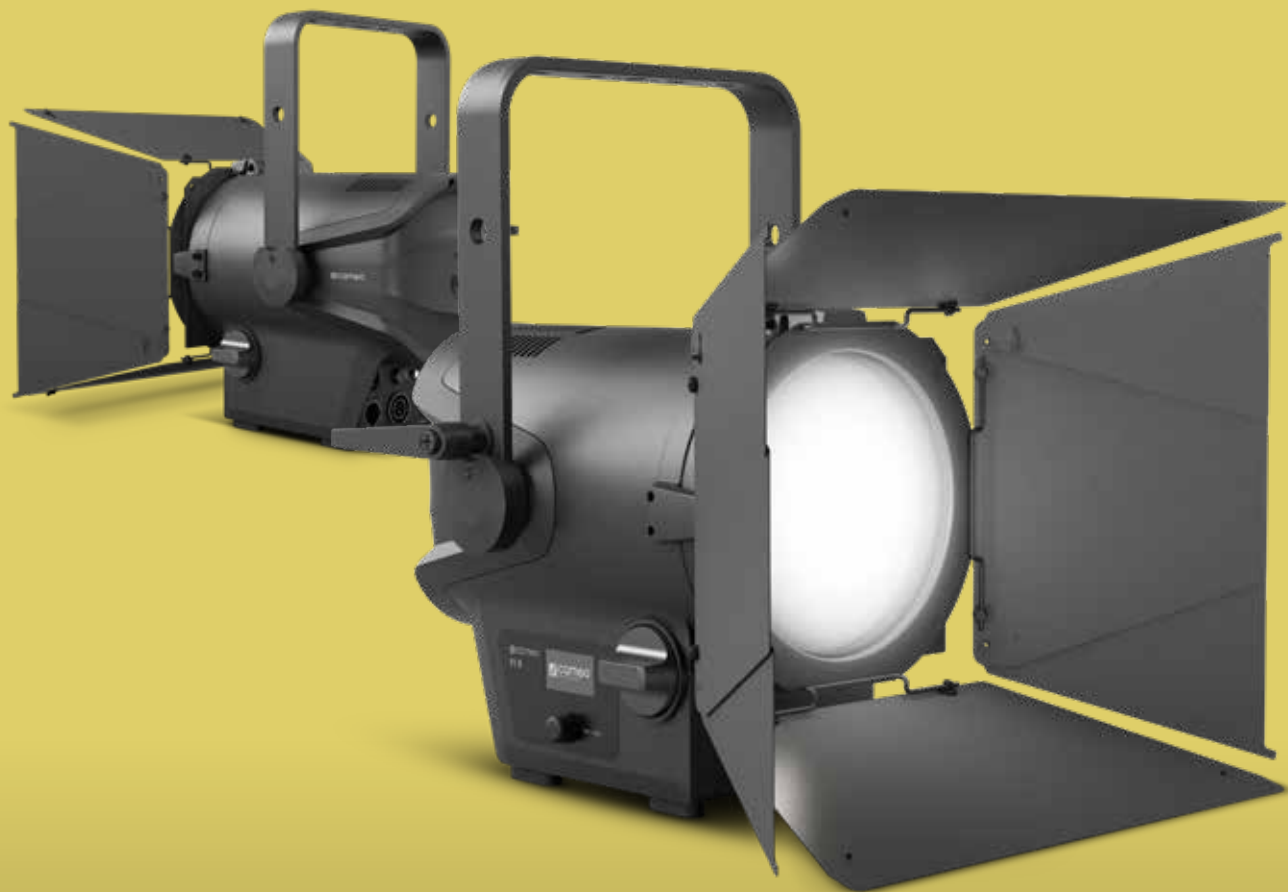
#### ACCESSORIES











# F1 D

## COMPACT FRESNEL SPOTLIGHT WITH DAYLIGHT LED

- ▶ Fresnel spotlight with daylight LED, 5600 K
- ▶ 6,000 lm luminous flux replaces conventional 650 W halogen Fresnel spotlights
- ▶ Natural colour reproduction (CRI: >90)
- ▶ Continuously variable zoom range (15° to 53°)
- ▶ Flicker-free camera images thanks to selectable pulse-width modulation up to 25 kHz
- ▶ Four selectable dimmer curves with adjustable response
- ▶ Highly efficient cooling system and silent mode for noise-free operation
- ▶ 8-way barn door and gel frame included
- ▶ Compact and lightweight design for mobile applications
- ▶ Optionally expandable with the V-mount battery plate for battery operation

As an event technician and theater lighting designer you know: the requirements for a Fresnel spotlight are identical regardless of the size of the application - high quality of light in the most compact dimensions possible, natural colour rendering, professional features such as adjustable PWM and silent mode and more.

In addition to large, powerful spotlights with several kW light output, large theaters need smaller versions that fit seamlessly into the lighting concept. But what about smaller stages, theater festivals away from the big festivals, ensembles on tour in unusual locations?

The F1 D provides you with an ultra-versatile LED Fresnel spotlight with daylight LED for use in theatres, live applications, broadcasting and film. It can be quickly and easily transported anywhere and utilized without mains cables when needed.



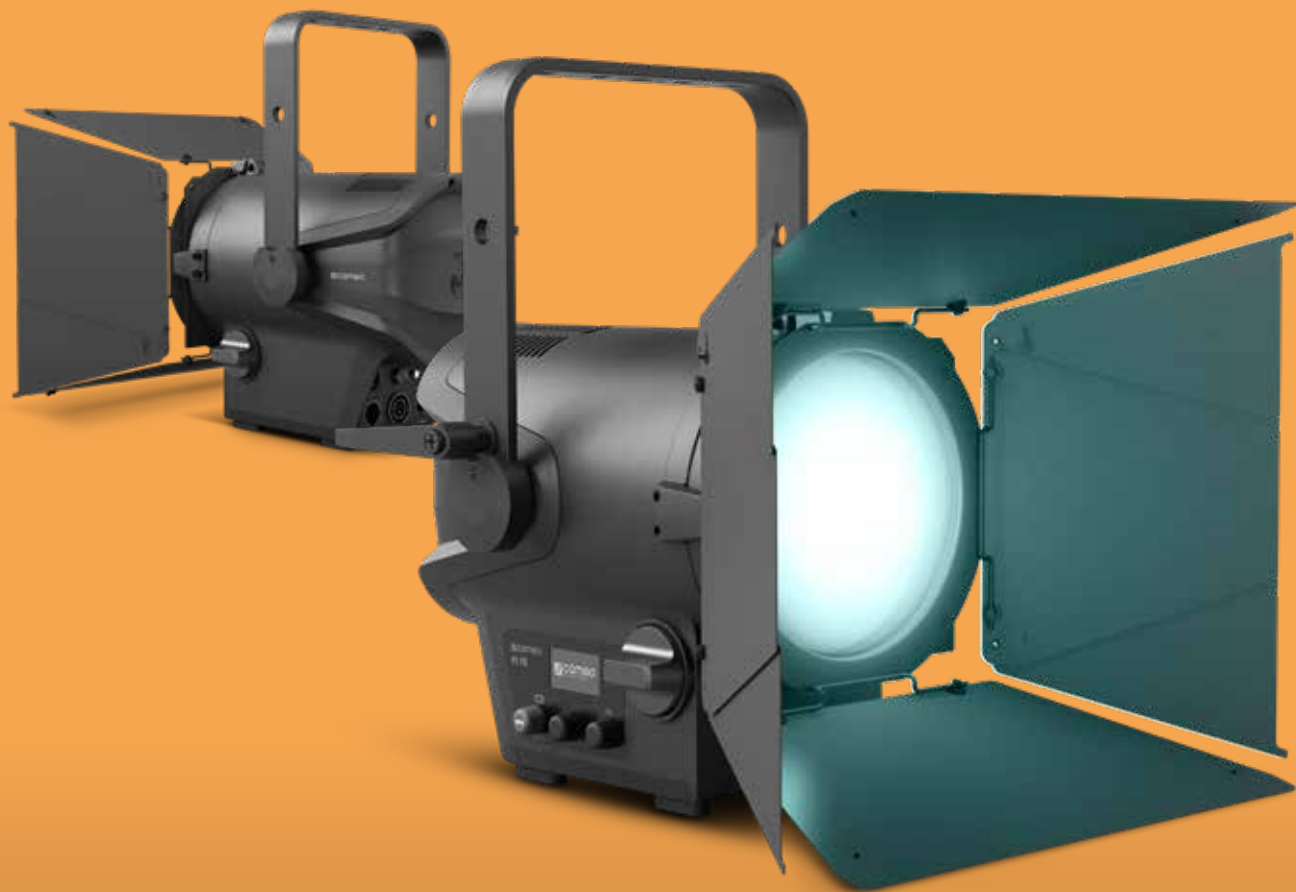
FOR MORE INFORMATION AND ACCESSORIES  
PLEASE SCAN THE QR-CODES

PRODUCT



ACCESSORIES





# F1 FC

## COMPACT FRESNEL SPOTLIGHT WITH RGBW-LED

- ▶ Full-colour Fresnel spotlight with RGBW-LED
- ▶ 2,600 lm luminous flux replaces conventional 650W haloge Fresnel spotlights
- ▶ Powerful, vibrant colour reproduction & continuous setting of the colour temperature 1600 - 6500 K, CRI > 90
- ▶ Adjustable green-magenta correction
- ▶ Continuously variable zoom range (15° to 53°)
- ▶ Flicker-free camera images thanks to selectable pulse-width modulation up to 25 kHz
- ▶ Four selectable dimmer curves with adjustable response
- ▶ Highly efficient cooling system and silent mode for noise-free operation
- ▶ 8-way barn door and gel frame included
- ▶ Optionally expandable with the V-mount battery plate for battery operation



As an event technician and theater lighting designer you know: the requirements for a Fresnel spotlight are identical regardless of the size of the application - high quality of light in the most compact dimensions possible, natural colour rendering, professional features such as adjustable PWM and silent mode and more. If the spotlight also has to cover the complete RGB colour spectrum, the requirements catalogue gets thicker and thicker.

In addition to large, powerful spotlights with several kW light output, large theaters need smaller versions that fit seamlessly into the lighting concept. But what about smaller stages, theater festivals away from the big festivals, ensembles on tour in unusual locations?

The F1 FC is an extremely versatile LED Fresnel spotlight with RGBW-LED for the theatre, live, broadcasting and film, which can be transported quickly and easily to any location and can work completely without power cabling if necessary.

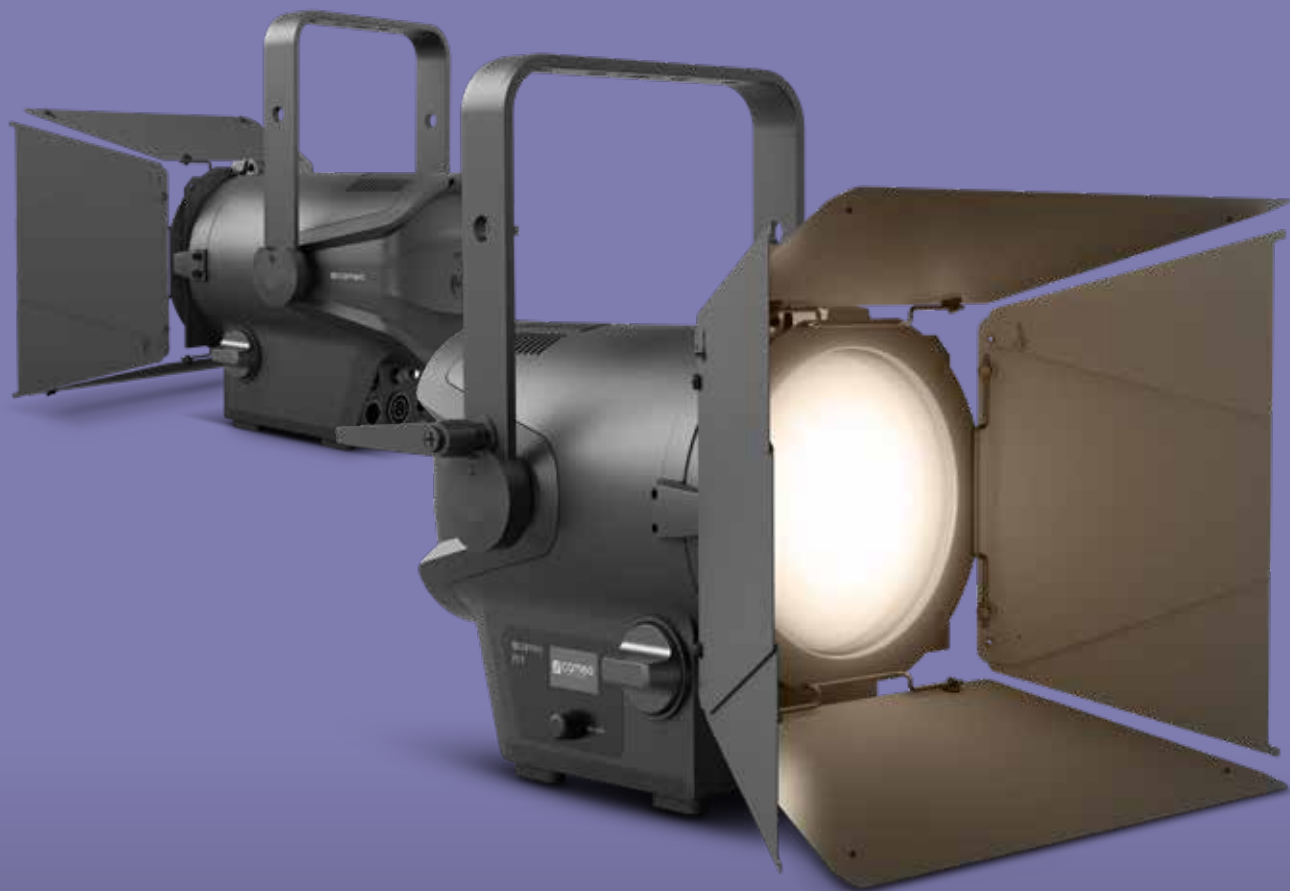
FOR MORE INFORMATION AND ACCESSORIES  
PLEASE SCAN THE QR-CODES

PRODUCT



ACCESSORIES







# F1 T

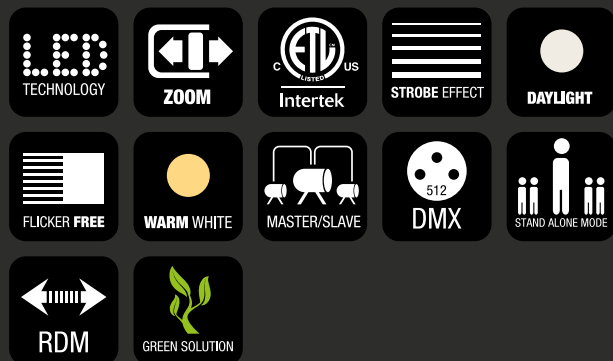
## COMPACT FRESNEL SPOTLIGHT WITH TUNGSTEN LED

- ▶ Fresnel spotlight with tungsten LED, 3000 K
- ▶ 4,800 lm luminous flux replaces conventional 650 W halogen Fresnel spotlights
- ▶ Natural colour reproduction (CRI: 98)
- ▶ Continuously variable zoom range (15° to 53°)
- ▶ Flicker-free camera images thanks to selectable pulse-width modulation up to 25 kHz
- ▶ Four selectable dimmer curves with adjustable response
- ▶ Highly efficient cooling system and silent mode for noise-free operation
- ▶ 8-way barn door and gel frame included
- ▶ Compact and lightweight design for mobile applications
- ▶ Optionally expandable with the V-mount battery plate for battery operation

As an event technician and theater lighting designer you know: the requirements for a Fresnel spotlight are identical regardless of the size of the application - high quality of light in the most compact dimensions possible, natural colour rendering, professional features such as adjustable PWM and silent mode and more.

In addition to large, powerful spotlights with several kW light output, large theaters need smaller versions that fit seamlessly into the lighting concept. But what about smaller stages, theater festivals away from the big festivals, ensembles on tour in unusual locations?

The F1 T provides you with an ultra-versatile LED Fresnel spotlight with tungsten LED for use in theatres, live applications, broadcasting and film. It can be quickly and easily transported anywhere and utilized without mains cables when needed.



FOR MORE INFORMATION AND ACCESSORIES  
PLEASE SCAN THE QR-CODES

PRODUCT



ACCESSORIES







# ACCESSORIES



FOR MORE INFORMATION AND ACCESSORIES  
PLEASE SCAN THE QR-CODES



# F1 V-MOUNT ACCESSORY PACK

V-MOUNT BATTERY ADAPTER FOR CAMEO F1 SERIES

FOR MORE INFORMATION AND ACCESSORIES  
PLEASE SCAN THE QR-CODES



# **F-SERIES SNAPBAG® SOFTBOX**

FOLDABLE SNAPBAG® SOFTBOX FOR F-SERIES SPOTLIGHTS





for lumen beings

**MKBFSERIEC**



**cameolight.com**



facebook.com/cameo.lighting  
youtube.com/cameolightandsound  
blog.adamhall.com

For more information please visit:  
**cameolight.com/f series**



The information contained in this publication, including numerical data, has been prepared as a general guide to the products, but intending buyers and users must satisfy themselves as to the suitability and the safety of the products for their particular purposes and duties. No responsibility is assumed for any errors herein. The company reserves the right to alter the designs and material specifications of products shown in this publication without notice.

Cameo® is a  
registered brand of

 **adam hall** experience  
event technology

**SOUND**  
TECHNOLOGY

**LIGHT**  
TECHNOLOGY

**STAGE**  
EQUIPMENT

**HARDWARE**  
FOR FLIGHTCASES

share the experience at  
**adamhall.com**